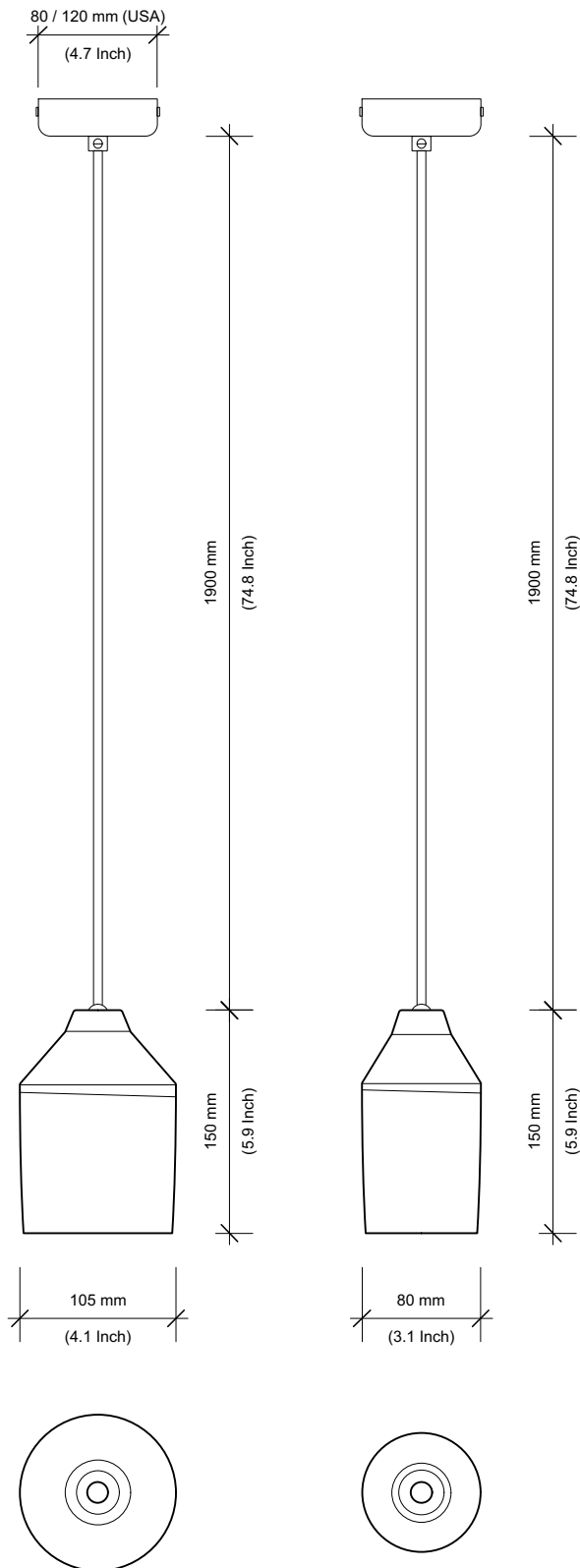


Dimensions- Side & top view



Design by

Linda Bloomfield

Material

Hand thrown porcelain & glaze finishes

Dimensions & weight

Wide:

H.150mm, Ø100mm, 0.6Kg (varies +/-10mm)

H.5.9inch, Ø3.9inch, 1.3lb

Narrow:

H.150mm, Ø80mm, 0.5Kg (varies +/-10mm)

H.5.9inch, Ø3.1inch, 1.1lb

Lamp type & wattage

- E27, Max 8W LED Golf Ball, 230v AC 50Hz
- E26 (USA), Max 8W LED Golf Ball, 120v AC 60Hz
- Bulb not included
- Dimmable if compatible bulb and controls

IP rating

IP20

Wiring certification

CE, EN60598

UL listed

Options

Size: Wide & narrow

Finish: Dark grey, light grey, yellow



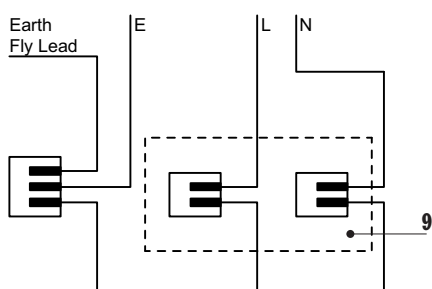
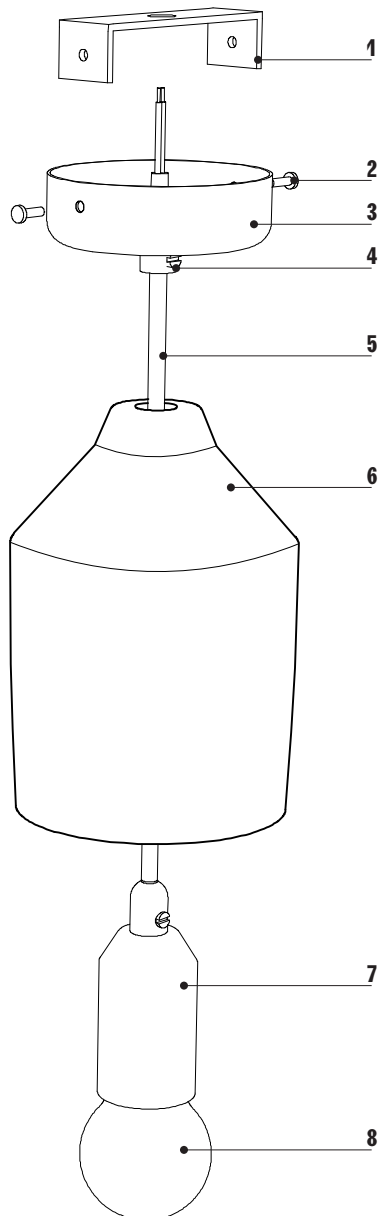
Morandi Safety Information EU/USA

- Please read the instructions before assembly or installation.
- Be sure to use a suitably qualified person for installation as the lights require connecting to mains power
- Install the light in conformity with all relevant local building codes and regulations.
- Make sure mains power is off during installation
- Make sure that the light is securely hung from the ceiling and that there is a suitable substrate for this. The weight of the lamp should not be taken by the electrical junction.
- When attaching the ceiling rose ensure you are working from a safe platform or ladder
- Do NOT use a light bulb of more than 8W Golf Ball type.
- Take care with the ceramic shade as this can break if hit hard enough. We recommend installing the lamp above furniture such as tables or island units or above head height.
- If at any point your light bulb breaks then, as with any light, do not touch the filament/LED part unless the power is turned off.
- Always turn off the power before changing a light bulb.
- If the external flex cable is damaged, this should only be replaced by the manufacturer or a similarly qualified person.
- Used electrical equipment (WEEE) should not be mixed with general household waste. Please recycle. Our products can be dismantled prior to disposal.
- USA note: UL regulations require a 'free air' gap between the ceiling and lamp holder so please allow for a minimum of a 4 inch length of flex between the canopy and the shade.

Diagram 1

Lamp components

1. Ceiling rose fixing plate
2. Ceiling rose side fixing screws
3. Ceiling rose cover
4. Ceiling rose flex fixing point (with side grub screw)
5. Flex
6. Ceramic shade
7. Lamp holder + fitting
8. Lightbulb (not supplied)
9. Connector blocks



Steps

1 Ceiling rose fixing plate

Attach the ceiling rose fixing plate (1) to the ceiling using suitable fixing method for the ceiling substrate. Ensure this is securely fixed as the lamp weight will be supported off this fixing. The screws are not provided.

2 Flex & Lamp holder

Thread the flex (5) through the ceramic lamp shade (6) from the large bottom opening. Then thread the flex through the ceiling rose clamp (4) as pictured. Set the hanging length and then tighten the grub screw on the ceiling rose clamp.

3 Connect the electrics

Get a qualified electrician to prepare the wires cutting off any excess flex (5) and exposing the positive and negative cables. Connect the mains power cables to the flex using the provided terminals/connector blocks (9). Ensure the mains earth/ground cable is connected to the ceiling rose earthing point.

Note!

- Mains power must be switched OFF before.

4 Securing the ceiling rose

Locate the ceiling rose metal cover (3) over the fixing plate (1) aligning the screw holes and secure the rose using the side fixing screws (2) provided.

Note!

- Ensure all electric cables easily fit within the ceiling rose and are not trapped or have any strain on the connections.
- For USA the rose is designed to fit over a 4 inch back box

5 Fit a light bulb

Fit an E27 (E26USA) LED golf ball sized light bulb.

Note!

- The incorrect light bulb will project beyond the ceramic. Please contact us for further advice on suitable bulbs.